



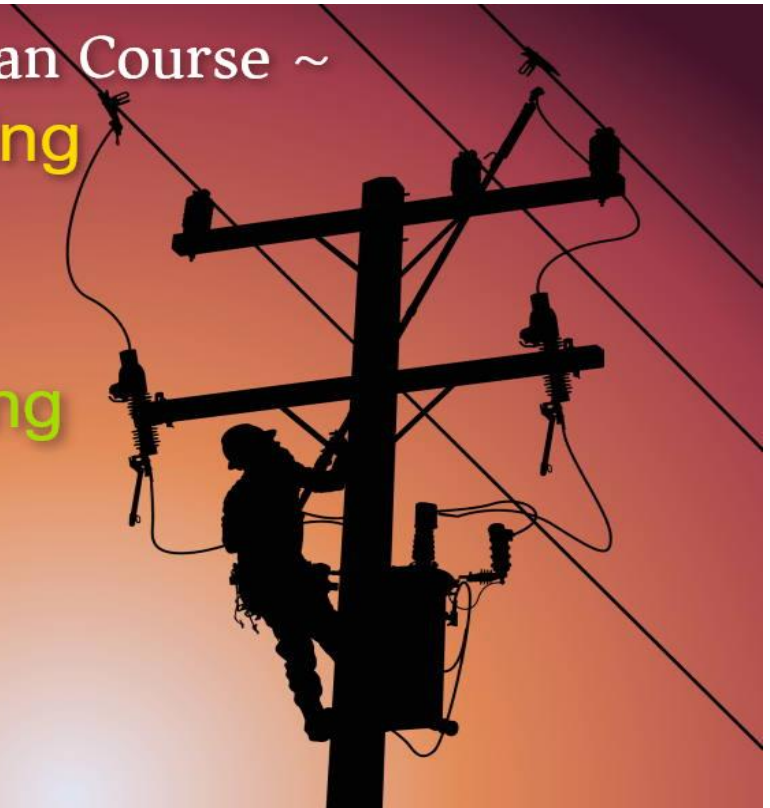
**Name of the Program(s): - Short Courses or Trade Courses-
Professional Training in Lineman, Electric Lineman Training,
Electric Lineworker Certificate,
Electrical Lineworker or Lineman Training, Diploma in Professional
Electric Lineworker Engineering.**

Are you interested in earning your Short Training Certificate or international Trade course in Electrical Linesman or Lineworker or Diploma in Professional Electric Lineworker Engineering? While this is a great step for your individual career, it doesn't have to be a complex one really if you study from GEPEA. This is the ultimate guide to enroll yourself in your desired short course trainings such as in Electrical Linesman, Lineworker Engineering Trainings as well as specific qualifications.

Upon completing the course respective student are usually equipped to plan and engage in effective trade practices. There are a number of benefits available with taking an international trade course. The number one advantage is the versatility of the information in the field s/he be trained. As like a short course or trade touches on a wide scope of industries, which aids to diversify the student's skill set. This also can open them up to various positions & make them more qualified to hiring potential employers.

~ Electrical Linesman Course ~
Lineworker Training

**Distance Learning
GEPEA**



ELECTRICAL LINESMAN TRAINING, LINEWORKER TRAINING,
TRADE COURSE PROFESSIONAL SKILLS TRAININGS

Training Hours: 24 or 30 GEPEA Credit hours.

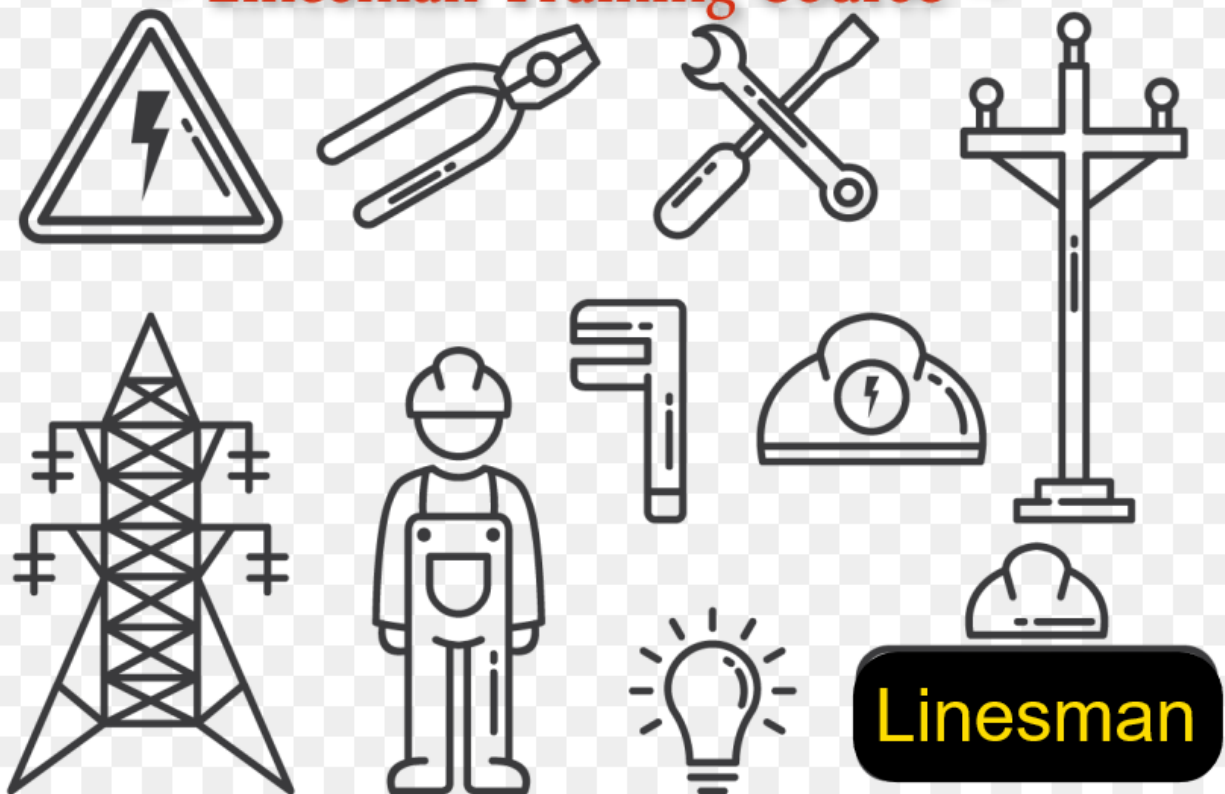
Program Duration: 1 Month (Fast Track) or 2 Months to 3 Months (For Part Time Home Study-Distance Learning) (Certifications).

Admission Requirements: A high school diploma or an associate degree in general science or science (or global equivalent), Secondary degree (high school diploma, associate degree, or the global equivalent). **Age Limit:** *No age bar or age limit.*

Other Requirements: Any Science related degree are needed to take this course, but have some extra skills using laptop/computer and internet, E-mail for communications will help.

Training Delivery: The course duration will comprise 24 or 30 hours of self-study home based or lecture based delivery. The 24 or 30 hours will be delivered in 4 to 5 sessions online distance learning based on given course materials. This 1 month or 2 months or 3 months' course aims to provide an introduction and depth understanding, practical training in the respective field. Even the short course or trade course will develop and enhance trainees a core -basic skills of the concern training and certification areas.

~ Linesman Training Course ~



Syllabus Outline

Serial No.	Syllabus component	Assignment TMA (Tutor Mark Assignment) or Case Study	Board Questions (OBS = Open Book System) Exam.	MCQ (Multiple Choice Questions) 10 Questions (each @ 2 marks)
	<p>TOTAL HOURS REQUIRED TO BE COMPLETED FOR THE ELECTRICAL LINESMAN TRAINING AND DIPLOMA IN LINESWORKER PROFESSIONAL CERTIFICATIONS</p> <p>= 4 sessions or parts will count 6 hours each (4 parts/courses x 6 hours study each = 24 hours total) = Grand Total 24 Hours</p> <p>AND</p> <p>For the Diploma course in Professional Linesman Training</p> <p>= 5 sessions or parts will count 6 hours each (5 parts/courses x 6 hours study each, including fieldwork (You're advised to attend in 6 hours Practical Training in your local area) = 30 hours total) = Grand Total 30 Hours</p>	45	35	20
	<p>Short Courses or Trade Courses- Professional Training in Linesman, Electric Lineman Training, Electric Lineworker Certificate, Electrical Lineworker or Lineman Training, Diploma in Electric Lineworker Engineering.</p>	<i>24 or 30 Hours (Time)</i>		
1	<p><u>Training Course Certificate Title:</u></p> <p>Electrical Safety – (Safety and Health for Electrical Trades)</p> <p>Section 1</p> <p>. 1 Electricity Is Dangerous</p> <p>. 1 How is an electrical shock received?</p> <p>. 2 Summary of Section 1</p> <p>. 5 Section 2</p> <p>. 6 Dangers of Electrical Shock</p> <p>. 6 Summary of Section 2</p> <p>. 11</p> <p>Section 3</p> <p>. 12 Burns Caused by Electricity</p> <p>. 12 Arc Blasts</p> <p>. 12 Electrical Fires</p> <p>. 14 Summary of Section 3</p>	<p>45</p> <p><i>6 Credit Hours Per Subject</i></p> <p><i>(3 Credits for Theoretical and 3 credits for Video Watching & Practice)</i></p>	35	20

.....	15 First Aid Fact Sheet
.....	16
Section 4	
.....	18 Overview of the Safety Model
.....	18 What must be done to be safe?
.....	18 Summary of Section 4
.....	21
Section 5	
.....	22 Safety Model Stage 1—Recognizing Hazards
.....	22 How do you recognize hazards?
.....	22 Summary of Section 5
.....	35
Section 6	
.....	36 Safety Model Stage 2—Evaluating Hazards
.....	36 How do you evaluate your risk?
.....	36 Summary of Section 6
.....	37
Section 7	
.....	38 Safety Model Stage 3—Controlling Hazards: Safe Work Environment
.....	38 How do you control hazards?
.....	38 How do you create a safe work environment?
.....	38 Lock out and tag out circuits and equipment
.....	39 Lock-out/tag-out checklist
.....	40 Control inadequate wiring hazards
.....	41 Control hazards of fixed wiring
.....	42 Control hazards of flexible wiring
.....	42 Use flexible wiring properly
.....	42
Section 8	
.....	58 Safety Model Stage 3—Controlling Hazards: Safe Work Practices
.....	58 How do you work safely?
.....	58 Plan your work and plan for safety
.....	59 Ladder safety fact sheet
.....	62 Avoid wet working conditions and other dangers
.....	65 Avoid overhead powerlines
.....	65 Use proper wiring and connectors
.....	65 Use and maintain tools properly
.....	68 Wear correct PPE
.....	70

Suggested Video Exercises:

Electrical Safety for Qualified Workers - Training Video

<https://www.youtube.com/watch?v=P4S6pJp-Dmo>

Electrical Specific PPE Video

<https://www.youtube.com/watch?v=H8LJyIyb6mQ>

Electrical safety for apprentices and young workers

<https://www.youtube.com/watch?v=FaYPEM2vgD4>

Effective Electrical Safety Programs - Focus on PPE

<https://www.youtube.com/watch?v=PIOdSt-uQDg>

Electrical Safety Devices

<https://www.youtube.com/watch?v=pSIMq-foS38>

ELECTRICAL SAFETY AT CONSTRUCTION SITES. Major

Electrical Hazards and their Control Measures

<https://www.youtube.com/watch?v=2qg1J0Y5XHs>

	Electrical Safety Basics https://www.youtube.com/watch?v=KhWIMqyPn5A			
2	<p><u>Training Course Certificate Title:</u> Electric Linesman Standard List of Duties and Responsivities –For understanding of Trainees</p> <p>We will share with student a written list of standard job duties and responsivities of a Linesman.</p> <p><u>Suggested Video Exercises:</u></p> <p>Day In The Life of a Lineman https://www.youtube.com/watch?v=btnwUQwc-DI</p> <p>Thinking of becoming a Lineman? https://www.youtube.com/watch?v=yR-bAPF3jG4</p> <p>What it Takes to Be a Lineman https://www.youtube.com/watch?v=NI9R7V7Or5I</p> <p>Tool box talk: Lineworker explains tools of the trade https://www.youtube.com/watch?v=FT-WXRpT7OU</p>	6 Credit Hours Per Subject		
3	<p><u>Training Course Certificate Title:</u> Overview of Lineman and Field Employee Training</p> <p>Stages and levels of Linesman (Apprentice to Manager).</p> <p>Some Still Picture and Illustrations of filed work of Linesman</p> <p>Cutting in Deadends in # 6 Copper, Energized</p> <p>Lay Out for Cutting in Deadends</p> <p>Rigging Laid Out in the Air</p> <p>Mechanical Jumper installed and pulling Slack in the Conductor</p> <p>Securing and Cutting the Conductor</p> <p>Inserting the #6 Copper into the automatic Deadend</p> <p>Remove Old Insulator and Install New with Jumper Tied In</p> <p>Removing Mechanical Jumper</p> <p>Permanent Jumper Installed</p> <p>Tailboard • Hazards • Methods • Roles • Tools and Materials • Worksite Protection</p>	6 Credit Hours		

Suggested Video Exercises:

Lineman Training

https://www.youtube.com/watch?v=R_5n-AVLzMw

How to Change Out a Voltage Regulator

<https://www.youtube.com/watch?v=tUpSNIsOHsU>

Pole Top Equipment - Voltage Regulators [PREVIEW]

https://www.youtube.com/watch?v=l-h_9eMuT0c

LINEMAN TRAINING Learning to Climb a Pole like a Lineman

<https://www.youtube.com/watch?v=GiGlypZJ9yl>

Lineman on job training

https://www.youtube.com/watch?v=d_kqgn66pms

Lineman Training: Climbing Techniques for a Beginning Student

<https://www.youtube.com/watch?v=3yFId43B0c8>

Lineman a log Discussion video

<https://www.youtube.com/watch?v=zFcxflKelGKc>

4.

Training Course Certificate Title: The Linemen's and Cablemen's Field Manual:

Chapter -1: The Electric System

Chapter -2: Line Conductors

Chapter -3: Cable, Splices and Terminations

Chapter -4: Distribution Voltage Transformers

Chapter -5: Wood Pole Structures

Chapter -6: Guying

Chapter -7: Lighting and Surge Protection

Chapter -8: Fuses

Chapter -9: Inspection Checklists

Chapter -10: Tree Trimming

Chapter -11: Rope, Knots, Splices and Gear

Chapter -12: Grounding

Chapter -13: Protective Grounds

Chapter -14: Safety Equipments and Rescue

Chapter-15: OSHA

*6 Credit
Hours*

*(3 Credits for
Theoretical and 3
credits for Video
Watching &
Practice)*

Suggested Video Exercises:

THE LINEMAN AND CABLEMAN'S FIELD MANUAL
CHAPTER 1: The Electric System

<https://www.youtube.com/watch?v=1fPXAPQRZY4>

THE LINEMAN AND CABLEMAN'S FIELD MANUAL
CHAPTER 2: Line Conductors

<https://www.youtube.com/watch?v=f5SgKU5On1E>

THE LINEMAN AND CABLEMAN'S FIELD MANUAL
CHAPTER 3: Cable, Splices & Terminations

<https://www.youtube.com/watch?v=TLrbZEwBQNE>

Chapter- 4

<https://www.youtube.com/watch?v=NyMY1BW1gg4>

Chapter-5

<https://www.youtube.com/watch?v=3mXW0FtDmhQ>

Chapter-6
<https://www.youtube.com/watch?v=5cNDY0KjWKI>

Chapter-7
<https://www.youtube.com/watch?v=U7PkRNeutLg>

Chapter-8
<https://www.youtube.com/watch?v=fYcBRjtEp2k>

Chapter -9
<https://www.youtube.com/watch?v=X1O-owID1U4>

Tree Trimming: <https://www.youtube.com/watch?v=J-fctQJVFSY>
Tree Trimming Safety Training Video
https://www.youtube.com/watch?v=hjd3tMgSU_Y

Chapter-11
<https://www.youtube.com/watch?v=zngXOXWhLT8>

Grounding
<https://www.youtube.com/watch?v=-5h26knf82U>
<https://www.youtube.com/watch?v=mpgAVE4UwFw> [Long video]

Good grounding and jumpering...lineman training
<https://www.youtube.com/watch?v=AP1Cj-m-ZE>

THE LINEMAN AND CABLEMAN'S FIELD MANUAL
CHAPTER 13: Protective Grounds
<https://www.youtube.com/watch?v=x3BJBImCTFs>

HE LINEMAN AND CABLEMAN'S FIELD MANUAL
CHAPTER 14: Safety Equipment's & Rescue
<https://www.youtube.com/watch?v=c5eYKPEHCul>

THE LINEMAN AND CABLEMAN'S FIELD MANUAL
CHAPTER 15 – OSHA
<https://www.youtube.com/watch?v=FlqHD7EHbG4>

**TOTAL HOURS REQUIRED TO BE
COMPLETED FOR THE ELECTRICAL
LINESMAN TRAINING AND DIPLOMA IN
LINESWORKER PROFESSIONAL
CERTIFICATIONS**

**= 4 sessions or parts will count 6 hours
each (4 parts/courses x 6 hours study each =
24 hours total) = Grand Total 24 Hours**

AND

**For the Diploma course in Professional
Linesman Training**

**= 5 sessions or parts will count 6 hours
each (5 parts/courses x 6 hours study each,
including fieldwork (You're advised to attend
in 6 hours Practical Training in your local
area) = 30 hours total) = Grand Total 30
Hours**

CAREER AND SCOPE OF SHORT COURSES AND TRADE PROFESSIONAL CERTIFICATES?

A trade course certificate or short training certificate and practical training professional certificate can open the door to a rewarding career in fields such as Electrical Lines Mechanics or Lineworker, Electrical lines installation, and other compatible services areas and so on.

COURSE MATERIAL

Besides using the traditional books GEPEA has also modernized the learning process by providing students with online portal consisting of –

- **Study Materials (Soft copies)** – PDF of books are provided to students making studies nomadic & convenient. GEPEA Department of Students Affairs will assign Study Materials via Email or other methods after registration and admission.
- The focal point of **GEPEA** study materials is enhancing Practical Education. **GEPEA** Kit provided to applicants is a world full of practical scenarios, explanation in terms of facts rather than theoretical phrases. Customized to be self-explanatory & easy to understand.
- **Faculty Guidance** – GEPEA panel of intellectuals guide students personally with regards to any query through email about any concept in the notes provided, being the author of the same.

EXAMINATION

GEPEA Professionals are given the privilege to answer exams from any examination center in the world along with the freedom to pick the exam schedule for the same, as time permits in the particular examination months of **GEPEA**. Students are allotted 2 modes of examinations – Home Based/Center Based.

- Question papers would be drafted by **GEPEA** panel of veteran professors which would be TMA (Tutor Mark Assignment), OBS (Open Book System) and MCQ study pattern. A single course will consist 100 marks based on these three pattern of exam types. In each program will consist a major (Thesis Research) course or theory in order to complete the respective Diploma Program.
- This unique & novel methodology teaches a student how to assess business situations and make decisions based upon those assessments, allowing students to display their potential.
- In case of home based/distance learning exams question paper would be emailed to the students, which they would have to answer & courier back to **GEPEA** office or **GEPEA** directed authority in the respectable exam slab.
- Candidate also has the option of appearing for Center Based Examination wherein they would have to visit one of the many **GEPEA** exam centers & complete answering the exam in the duration of 3 hours which wouldn't be an open book examination.

CASE STUDY METHOD & STUDY MATERIAL:

Today communication systems have advanced so much that it is much easier, convenient and quicker to gain expertise via online distance learning. **GEPEA** offer potential students the opportunity to study through an autonomous online distance learning program. This means that people who can't get traditional further education can still achieve what they want and get their qualifications through Online Distance Learning. That gives the opportunity for a much wider range of people to get the qualifications that they want.

Today, thanks to technological advances, higher education is more readily available to those who want it.

GEPEA is an institute of excellence offering widest range of autonomous programmes in the field of Business Management and different Professional Training education. In response to the rapidly changing economic environment and the process of globalization, the Academy has made sustained efforts to bring an international perspective to all its wide range of areas and activities.

BENEFITS AND FETURES:

- (i) **Flexible Programs & Curriculum:** You can earn and study at the same time! From GEPEA International Curriculum, Flexibility is the biggest advantage of distance learning courses. This stands true especially if you are a working professional. Not everyone has the luxury of taking their own time to finish their studies. For those who had to take a break from studies to start working, such courses are a boon and provide the opportunity to pursue higher education.
- (ii) **Saves Time & Energy:** You save up a lot of time and energy on commuting. You can stay at any place and pursue a course that is available at GEPEA. Or you might be based out of a remote village or town which does not have enough options for higher studies. Distance learning courses eliminate these obstacles.
- (iii) **MCQ, Case Based Learning:** MCQ, A Case-based approach engages students in discussion of specific situations, typically real-world examples of African, Asian and International companies. Allowing the students to put their theoretical knowledge to practice.
- (iv) **Study at your own Pace:** Not everyone has the same pace of learning. Some students pick up things fast, others need time to grasp a concept. One of the biggest advantages of distance learning is that you can study at a pace that is comfortable for you.
- (v) **Saves Money:** These courses are almost always cheaper as compared to their on-campus counter-parts. You also cut down on the costs incurred while commuting etc.
- (vi) **Personal Fulfillment:** An MBA is the key to unlocking both a professionally and personally rewarding future. Education is the foundation upon which you can build lifelong business and personal achievements. The GEPEA MBA program is designed to enrich your personal life, as well as to keep you informed about a constantly changing industry.
- (vii) **Convenient:** You can submit your assignment with the click of a button or simply drop it off at a post-office! It's sometimes as simple as that!
- (viii) **24X7 Access to Study Material & fellow Students:** This is the best way to study if you are comfortable with internet and technology. You can access your study material online whenever you want and also clear doubts, exchange views and discuss with your virtual class-mates!
- (ix) **Study any Topic You Want:** Since you'd already have all your books/online study material with you, you can pick up any topic/chapter that interests you and tackle that first! This way your interest in the subject is sustained.
- (x) **Higher Level of Self-Confidence:** The knowledge gained through our Correspondence MBA program will enhance your effectiveness in your current position and help define your future career path. It will sharpen your skills in critical business areas, giving you the self-confidence you need to become a leader in your profession.
- (xi) **Specialization:** We provide more than 80 specializations which allow students to gain additional knowledge and background on specific business topics.

ACCREDITATIONS AND RECOGNITIONS:

ITQSM Accredited & International Partnered Professional Academies.

GEPEA has proudly claimed the Excellence in Online Distance Learning Award presented by its Governing Body Really Matters as a token of appreciation for providing top notch education to professionals globally. This solely proclaims that GEPEA is one of the best Professional Academy in the field of online distance learning.

PROFESSIONAL FACULTIES:

GEPEA Faculty members are highly professional, qualified & experienced. Professors provide substantial assistance through 24*7 web support. Each & every query regarding studies, assignments, cases, projects, research are resolved on time & responded with clear, relevant answers on par with syllabus. They update themselves from time to time about the changing market scenario & syllabus. Thus working professionals have chance to get resourceful information by interacting with professors through web-support from time to time. Timely communication & assistance is key to our successful association with our students & our professors believe in same.

GEPEA (Global Educational & Professional Excellence Academy)

*In case any query, please feel free to contact us via E-Mail:
gepea.official@gmail.com , office@gepea.eu or visit Website: www.gepea.eu or
www.gepea.education*